



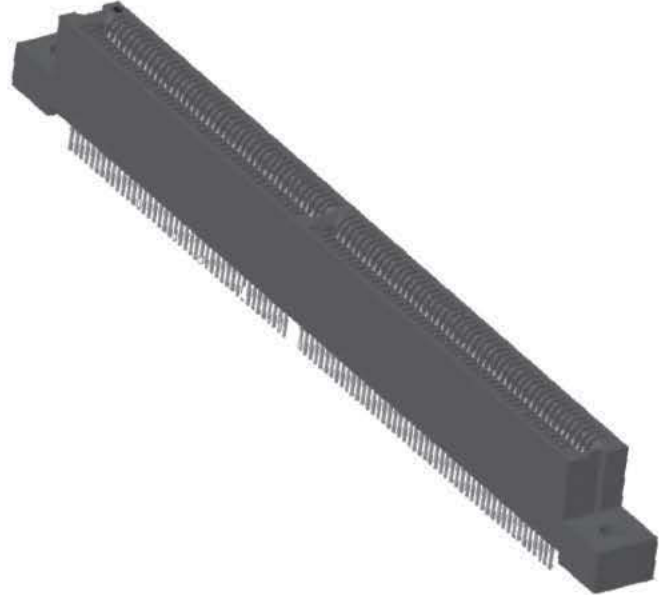
.050" [1.27 mm] Contact Centers, .610" [15.49 mm] Insulator Height
[MCA] Dip Solder/Card Extender/SMT

Industry Standard

Part

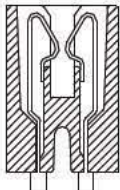
SPECIFICATIONS

- Accommodates .062" ± .008" [1.57 ± .20] PC board
(Consult factory for other board thicknesses)
- PPS or PA9T insulator
- Molded-in key available
- High reliability/high cycle hairpin bellows contact
- 1 amp current rating per contact
- 150 grams normal force minimum
- UL Flammability Rating: 94V-0



Sullins Card Edge

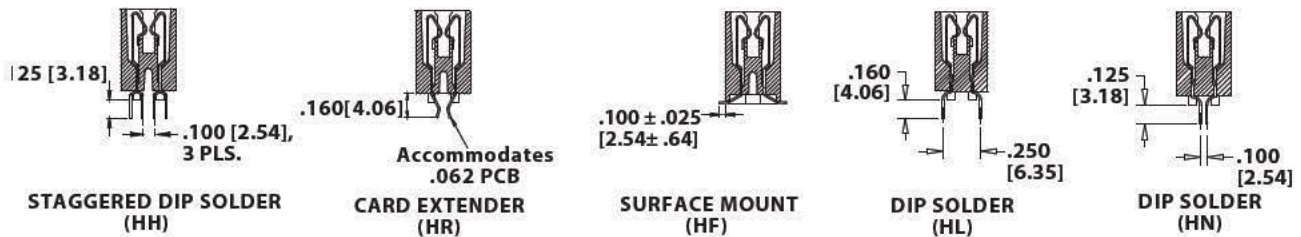
READOUT



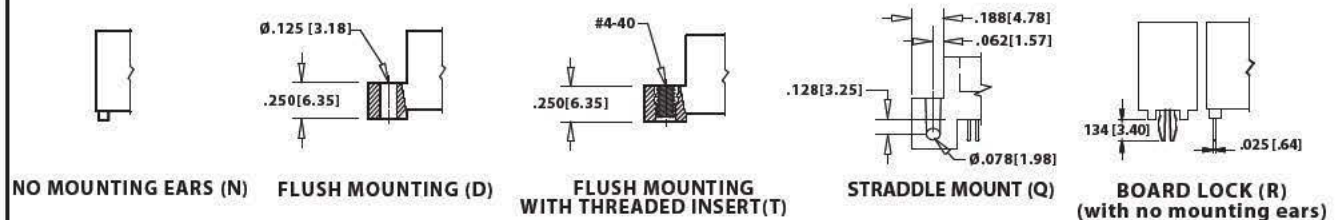
DUAL (D)

TERMINATION TYPE

Consult Factory for PC Board Layouts



MOUNTING STYLE



**.050" [1.27 mm] Contact Centers, .610" [15.49 mm] Insulator Height
[MCA] Dip Solder/Card Extender/SMT**

Industry Standard Part



Sullins Card Edge

PART NUMBER OPTIONS

MATERIALS (Insulator/Contact)

- G = PA9T/Phosphor Bronze
- R = PPS/Phosphor Bronze
- J = PA9T/Beryllium Copper
- A = PPS/Beryllium Copper

CONTACT FINISH - RoHS Compliant

All platings are Lead Free and have .000050" Nickel underplate

- | | | |
|-----|------------------------|--------------------------|
| | <i>Contact Surface</i> | <i>Termination</i> |
| B = | .000010" Gold | .000100" Pure Tin, Matte |
| C = | .000030" Gold | .000100" Pure Tin, Matte |

CONTACT CENTERS

- B = .050" [1.27mm]

NUMBER OF CONTACT POSITIONS

- 56, 66, 91, 106

G B B 56 D HH D - S578

MODIFICATION (Consult Factory)

- S578 = Card Slot Barriers With Guide Posts
- S621 = Card Slot Barriers Without Guide Posts

MOUNTING STYLE

- N = No Mounting
- D = Flush Mounting
- T = Flush Mounting With Threaded Insert
- Q = Straddle Mount (Card Extender Only)
- R = Metal Board Lock

TERMINATION TYPE

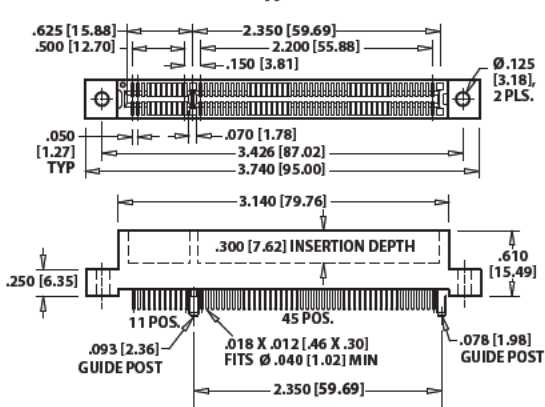
- HH = Staggered Dip Solder
- HR = Card Extender
- HF = Surface Mount
- HL = .250" [6.35mm] x .160" [4.06mm] Dip Solder
- HN = .100" [2.54mm] x .125" [3.18mm] Dip Solder

READOUT

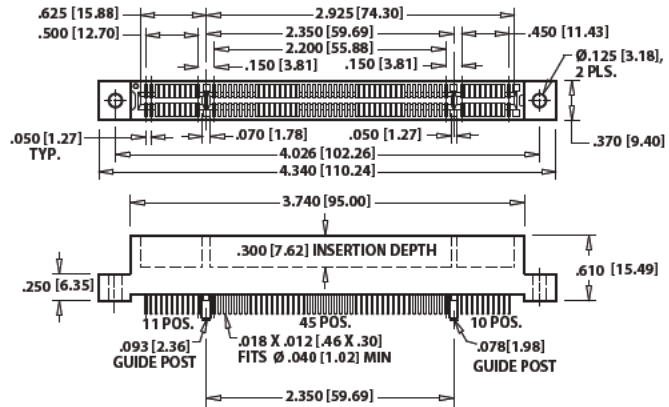
D = Dual

DIMENSIONS

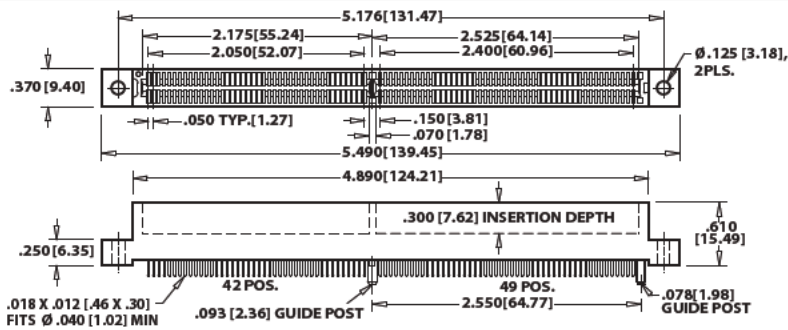
Dimensions in [] are in millimeters, all others are in inches.



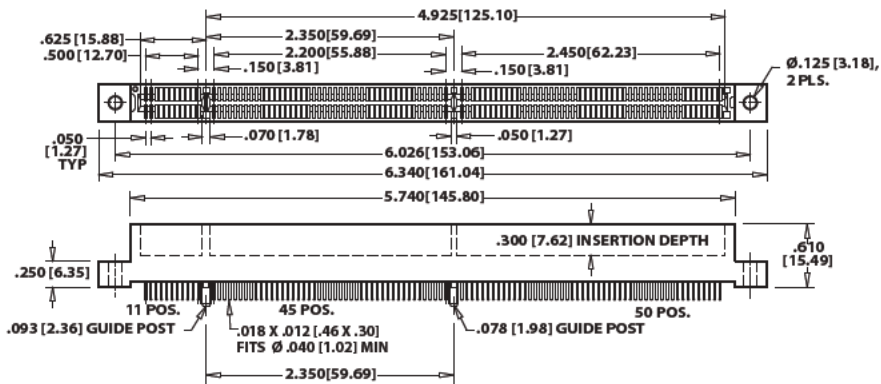
GBB56DHH-S578, 56 (11/45) POSITIONS



GBB66DHH-S578, 66 (11/45/10) POSITIONS



GBB91DHH-S578, 91 (42/49) POSITIONS



GBB106DHH-S578, 106 (11/45/50) POSITIONS